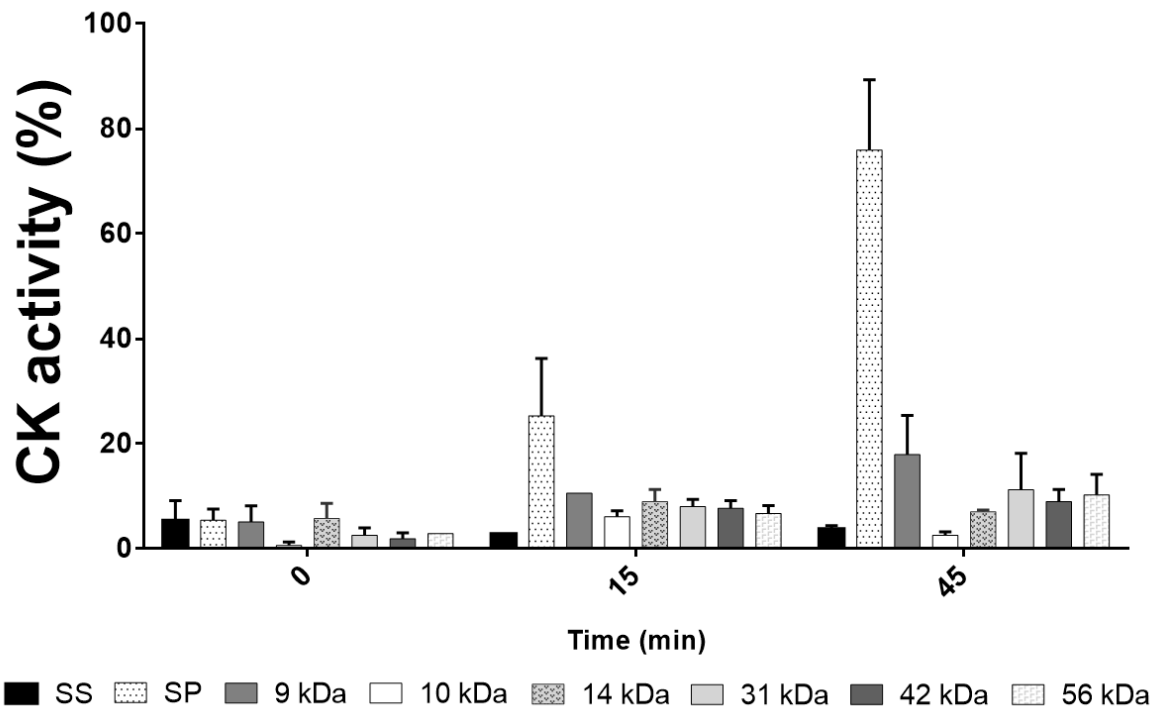


## Supplementary material to: Mitochondrial activity disruption and local muscle damage induced in mice by *Scolopendra polymorpha* venom



**Additional file 3.** CK *in vitro* activity of electroeluted bands. CK activity, expressed as a percentage, was measured before the addition of venom or electroeluted bands (time = 0 min) and at 15 and 45 min after muscle exposure to venom or venom fractions. SS: saline solution; SP: whole venom; 9 kDa-56 kDa: electroeluted bands. Average values  $\pm$  SEM are shown. \*Statistical significance ( $p < 0.05$ ).