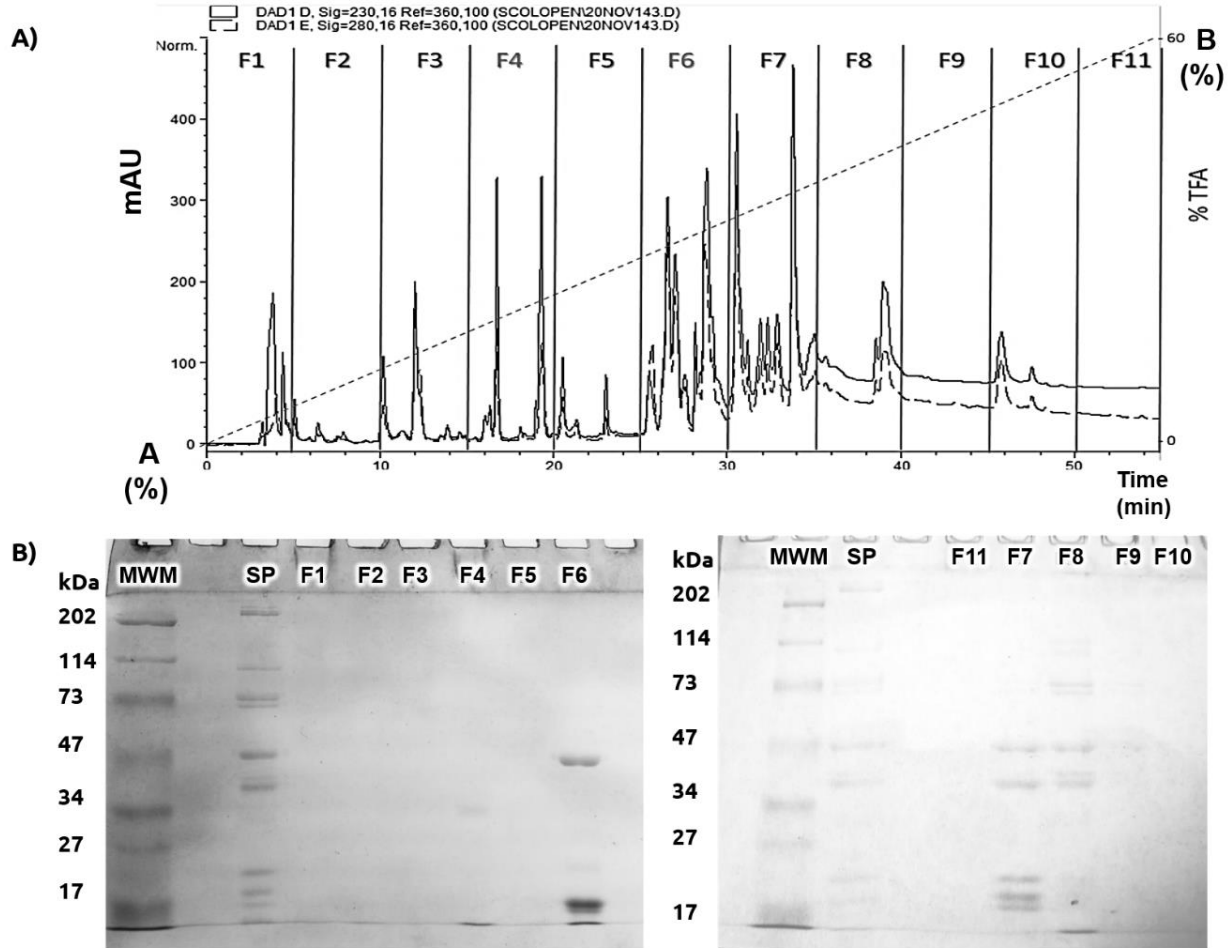


## Supplementary material to: Mitochondrial activity disruption and local muscle damage induced in mice by *Scolopendra polymorpha* venom



**Additional file 1.** Fractionation of *S. polymorpha* venom. **(A)** RP-HPLC profile. Crude venom was separated using a C18 column in RP-HPLC. Linear gradient from 0% buffer A (TFA 0.12% in H<sub>2</sub>O) to 60% buffer B (TFA 0.1% in). Flow: 1 mL/min. Optical density was monitored at 230 nm. **(B)** SDS-PAGE of RP-HPLC fractions. Analysis performed under non-denaturing conditions. MWM: molecular weight markers; SP: *S. polymorpha* whole venom; F1-F11: venom fractions. Coomassie blue stain.