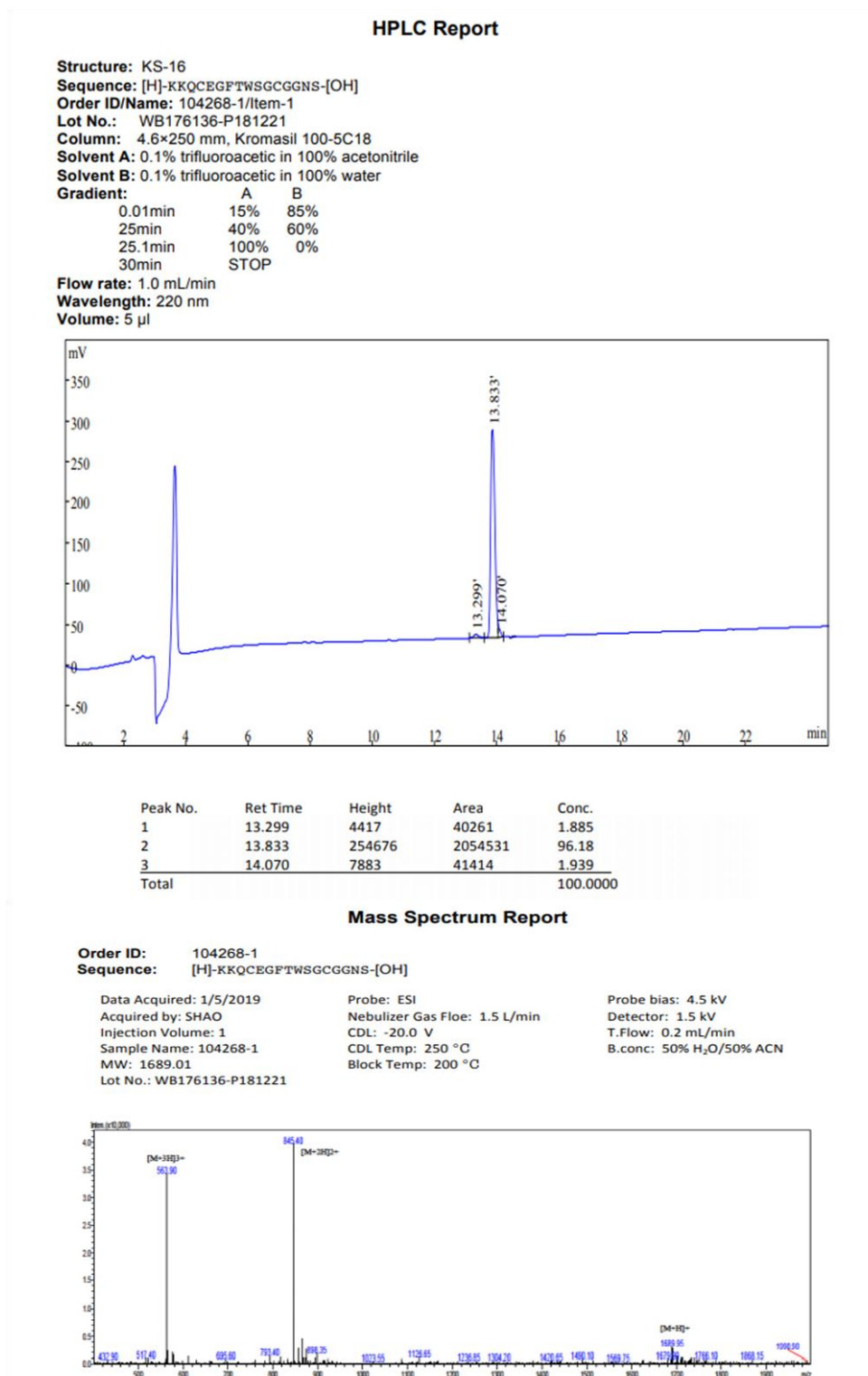


## Supplementary Material to “A Kunitz-type peptide from *Dendroaspis polylepsis* venom as a simultaneous inhibitor of serine and cysteine proteases”

**Additional file 1.** (A) HPLC and mass spectrum reports of PEP1. (B) HPLC and mass spectrum reports of PEP2.

**A**



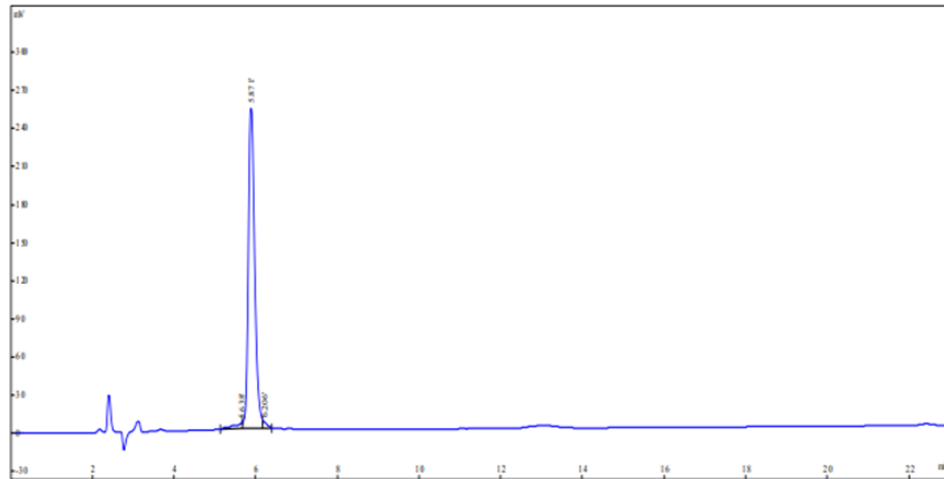
B

### HPLC Report

**Structure:** PG-30  
**Sequence:** [H]-PGRCYQKIPAFYYNQKKKQVEGFTWSGCGG-[OH]  
**Order ID/Name:** 104268-2/Item-2  
**Lot No.:** WB176137-P181221  
**Column:** 4.6×250 mm, Kromasil 100-5C18  
**Solvent A:** 0.1% trifluoroacetic in 100% acetonitrile  
**Solvent B:** 0.1% trifluoroacetic in 100% water  
**Gradient:**

	A	B
0.01min	26%	74%
25min	51%	49%
25.1min	100%	0%
30min	STOP	

**Flow rate:** 1.0 mL/min  
**Wavelength:** 220 nm  
**Volume:** 5 µl



Peak No.	Ret Time	Height	Area	Conc.
1	5.638	4258	72307	2.787
2	5.871	251710	2481895	96.03
3	6.206	4331	30632	1.185
Total				100.0000

### Mass Spectrum Report

**Order ID:** 104268-2  
**Sequence:** [H]-PGRCYQKIPAFYYNQKKKQVEGFTWSGCGG-[OH]

Data Acquired: 1/5/2019	Probe: ESI	Probe bias: 4.5 kV
Acquired by: YU	Nebulizer Gas Flow: 1.5 L/min	Detector: 1.5 kV
Injection Volume: 1	CDL: -20.0 V	T.Flow: 0.2 mL/min
Sample Name: 104268-2	CDL Temp: 250 °C	B.conc: 50% H <sub>2</sub> O/50% ACN
MW: 3439.95	Block Temp: 200 °C	
Lot No.: WB176137-P181221		

