

MATERIAL SUPLEMENTAR

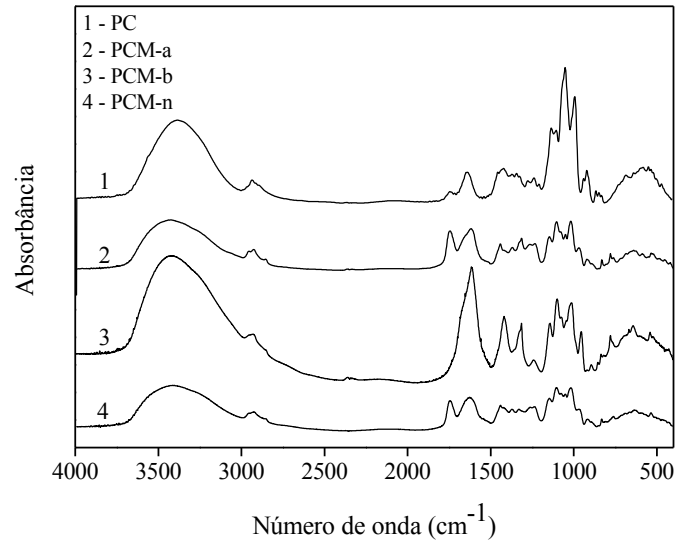


Figura 1S. Espectro de FT-IR das amostras: (1) PC, (2) PCM-a, (3)PCM-b e (4)PCM-n

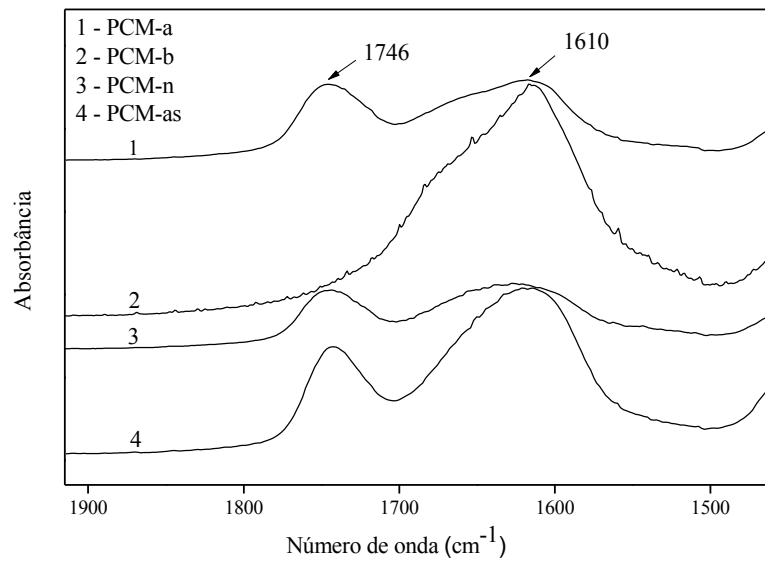


Figura 2S. Bandas do FT-IR utilizadas para o cálculo do GE das amostras: (1) PCM-a, (2)PCM-b, (3)PCM-n e (4)PCM-as

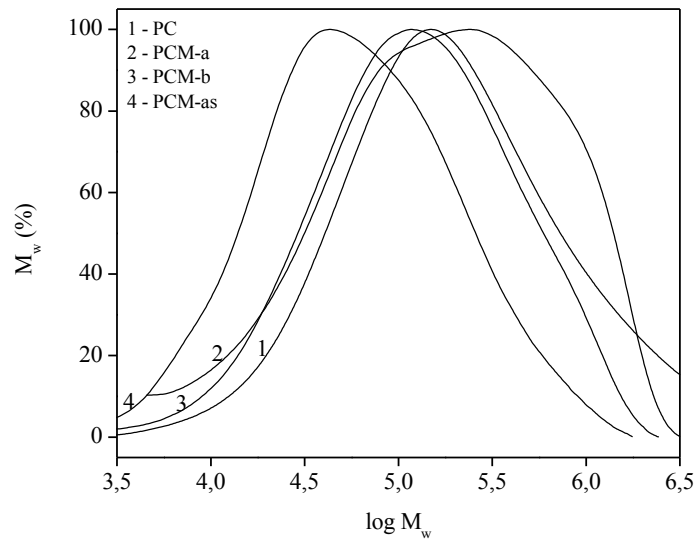


Figura 3S. Curva de GPC para as amostras: (1) PC, (2) PCM-a, (3) PCM-b e (4)PCM-as

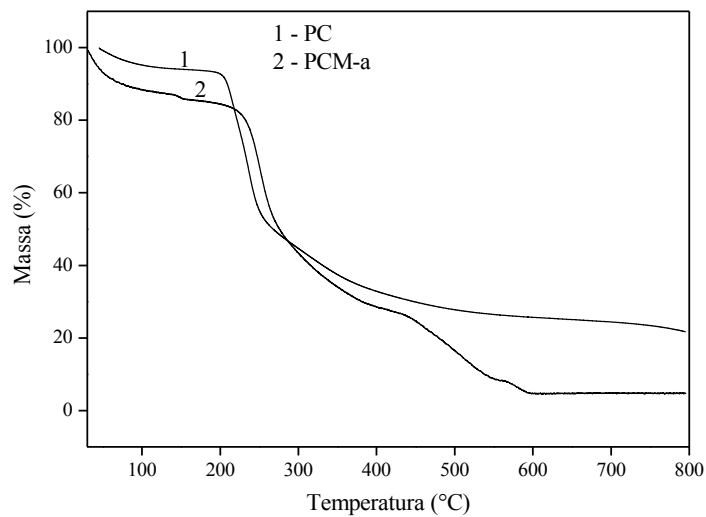


Figura 4S. Curvas de degradação térmica da massa das amostras: (1) PC e (2) PCM-a obtidas em atmosfera de Nitrogênio com taxa de aquecimento de $10\text{ }^{\circ}\text{C min}^{-1}$

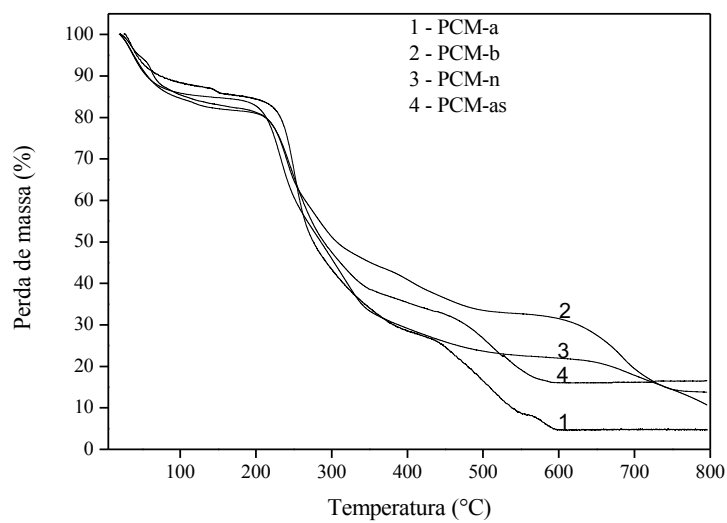


Figura 5S. *Curvas de degradação térmica da massa aproximadas amostras: (1) PCM-a, (2) PCM-b, (3) PCM-n e (4) PCM-as obtidas em atmosfera de Nitrogênio com taxa de aquecimento de $10\text{ }^{\circ}\text{C min}^{-1}$*