

**Supplementary Material to “Cytogenetic and genetic data support
Crossodactylus aeneus Müller, 1924 as a new junior synonym of
C. gaudichaudii Duméril and Bibron, 1841 (Amphibia, Anura)”**

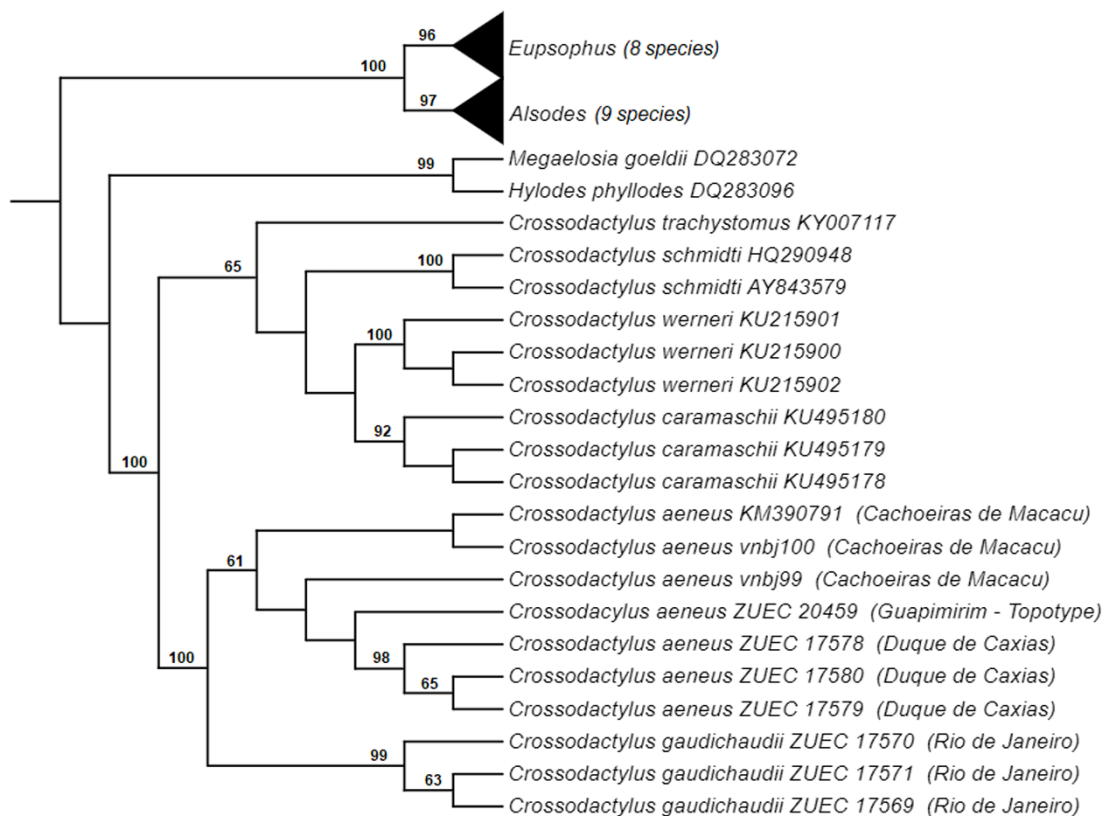


Figure S1 - Phylogenetic relationships among the *Crossodactylus* species analyzed in the present study, inferred by maximum parsimony analysis of a 2,369-bp H1 mitochondrial DNA sequence matrix. The numbers at each node indicate the bootstrap values (values below 50 have been omitted).