

Supplementary Material to “Mitochondrial genomes of genus *Atta* (Formicidae: Myrmicinae) reveal high gene organization and giant intergenic spacers”

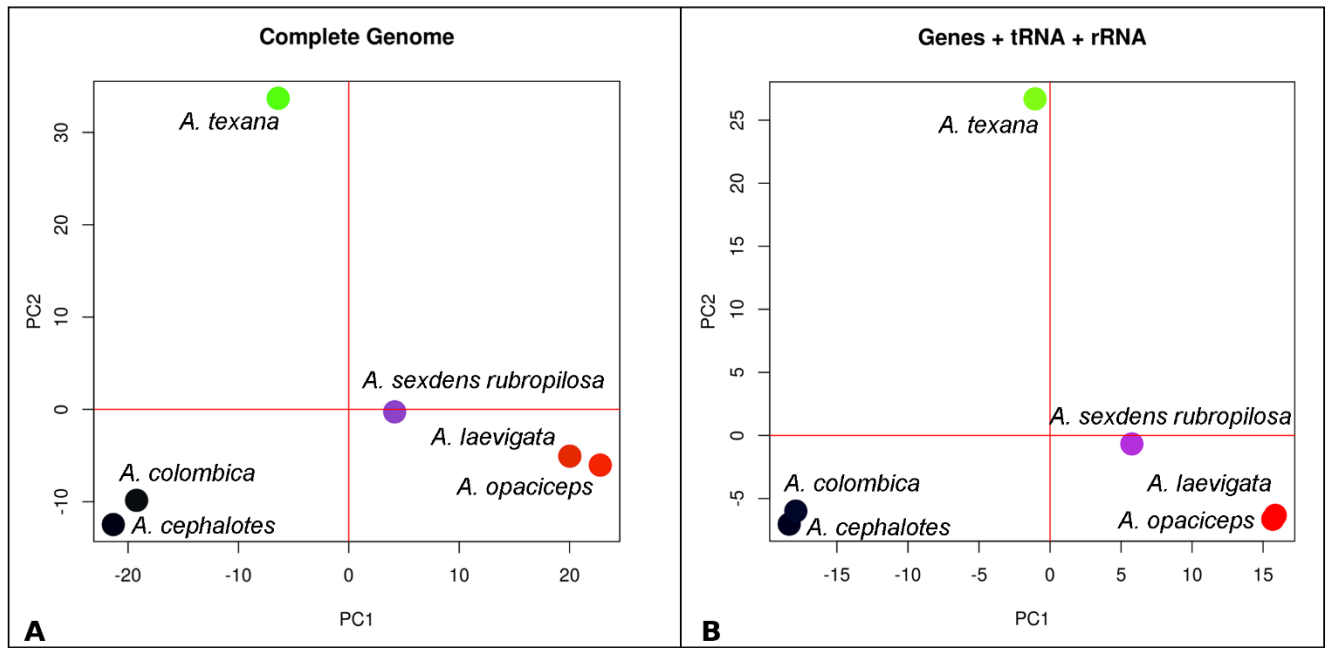


Figure S4 - Principal component analysis (PCA) for five species of the *Atta* genus and three outgroup species. (A) PCA using complete mitogenomes and (B) PCA using the coding regions (genes + tRNA + rRNA). The colors denote values for the first two principal component (PC) axes.