

Supplementary Material to “Cryptic diversity and diversification processes in three cis-Andean *Rhamdia* species (Siluriformes: Heptapteridae) revealed by DNA barcoding”

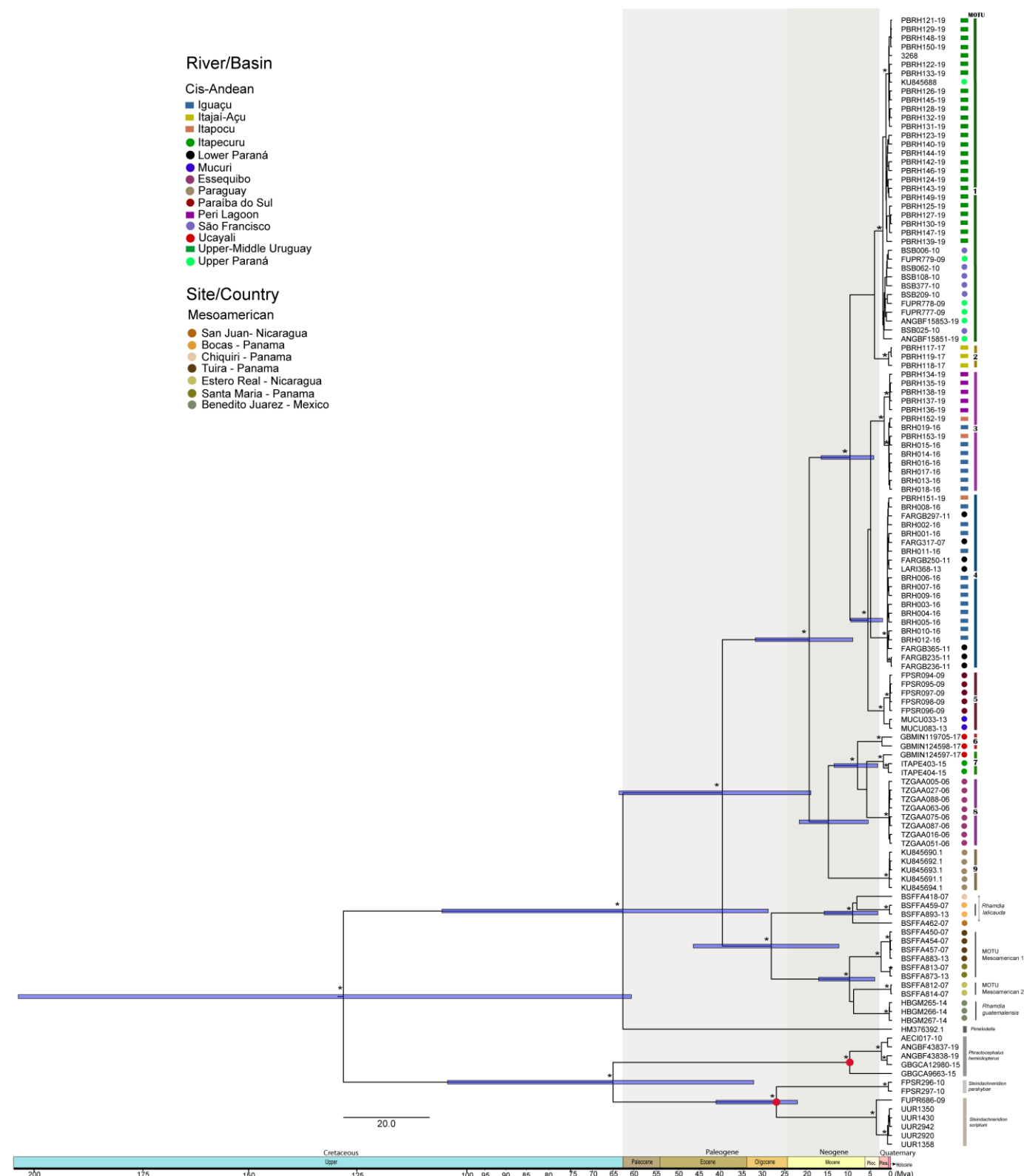


Figure S2 - Time-calibrated topology of *Rhamdia* and outgroups (*Pimelodella*, *Phractocephalus*, and *Steindachneridion*) based on COI sequences. The asterisks represent posterior probabilities above 0.9. Circles represent samples from BOLD System (<http://www.boldsystems.org/>), while squares are sequences obtained in this study. Red circles indicate the calibration points.