

Supplementary Material to “Cryptic diversity and diversification processes in three cis-Andean *Rhamdia* species (Siluriformes: Heptapteridae) revealed by DNA barcoding”

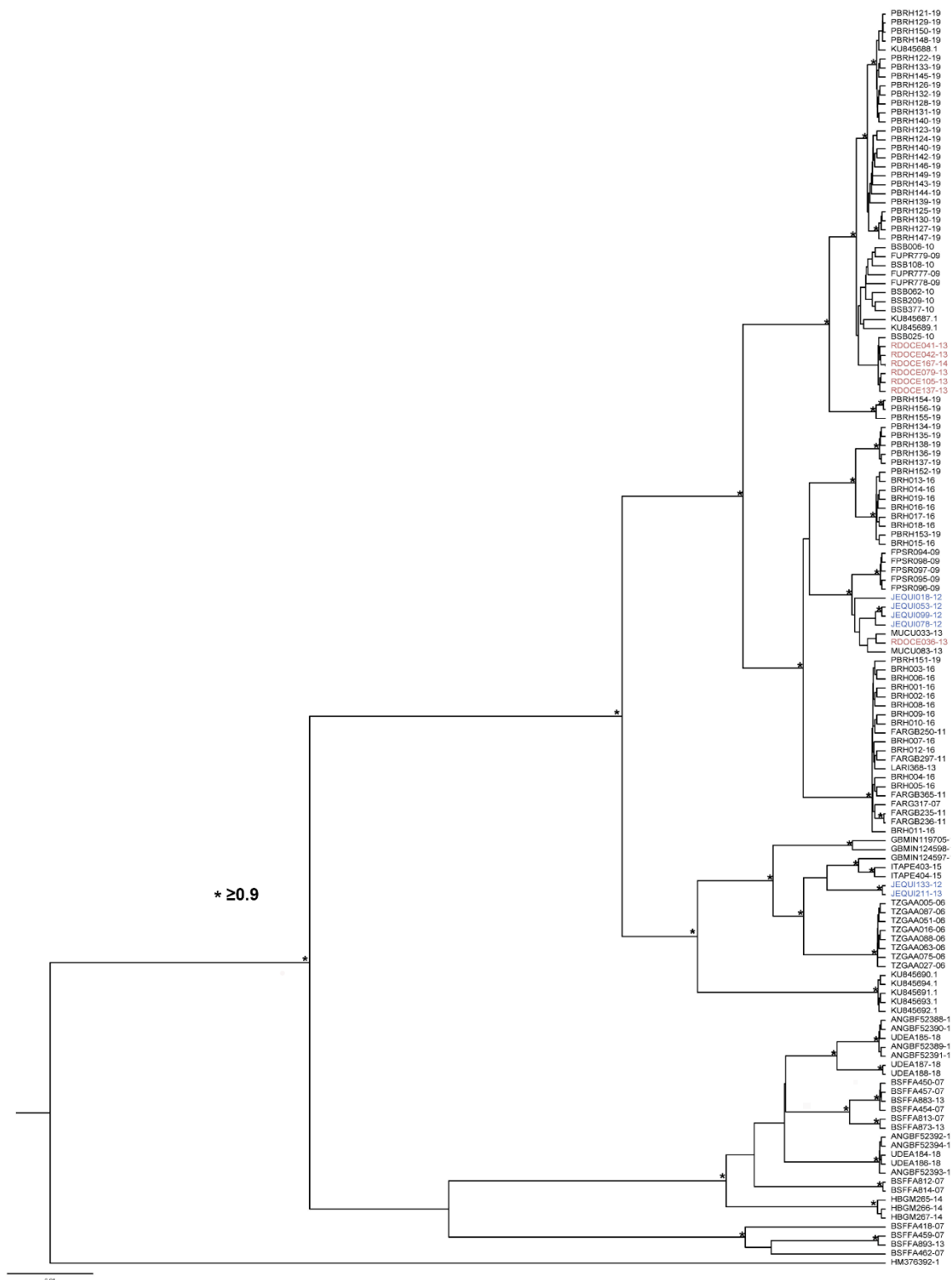


Figure S1 - Bayesian inference topology of *Rhamdia* based on COI sequences included sequences from Jequitinhonha (blue and red colors). The asterisks represent posterior probabilities above 0.9.