

Supplementary material

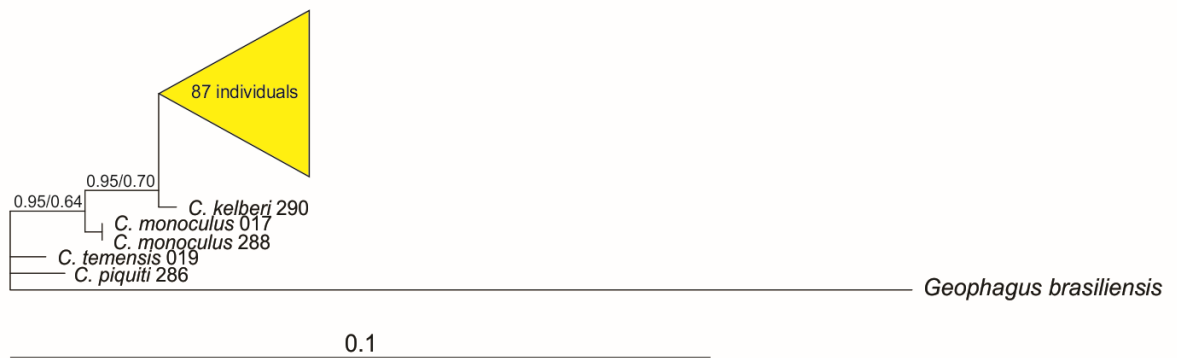


Figure S1. Bayesian consensus tree reconstructed based on sequences of *Cichla* individuals from the submiddle stretch of the São Francisco River and reference sequences for 16S rDNA. GenBank reference sequences were named as *C. monoculus*, *C. temensis*, *C. kelberi* and *C. piquiti*, followed by the last three digits of accession number.

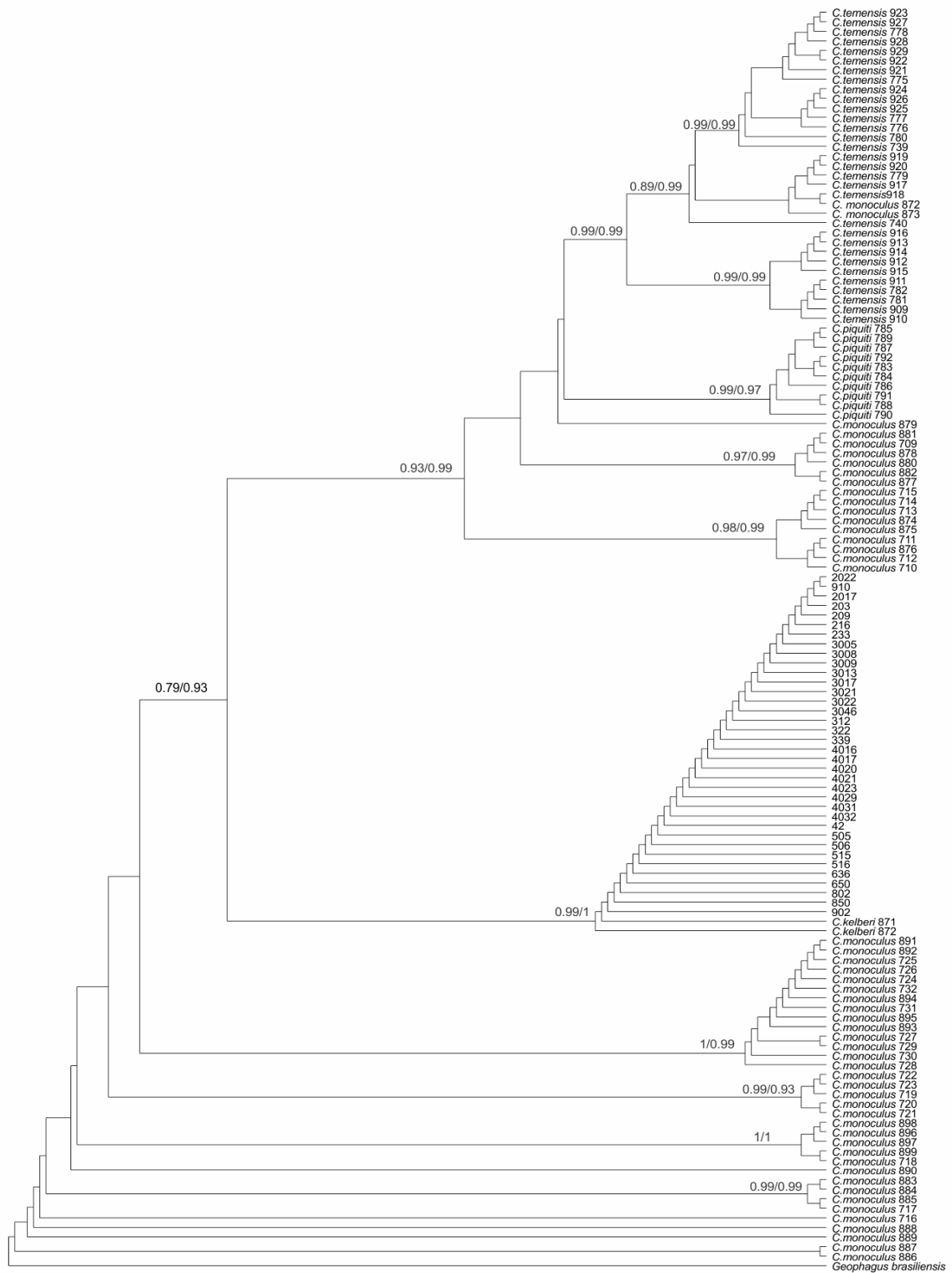


Figure S2. Bayesian consensus tree reconstructed based on sequences of *Cichla* individuals from the submiddle stretch of the São Francisco River and reference sequences for Control Region. GenBank reference sequences were named as *C. monoculus*, *C. temensis*, *C. kelberi* and *C. piquiti*, followed by the last three digits of accession number.