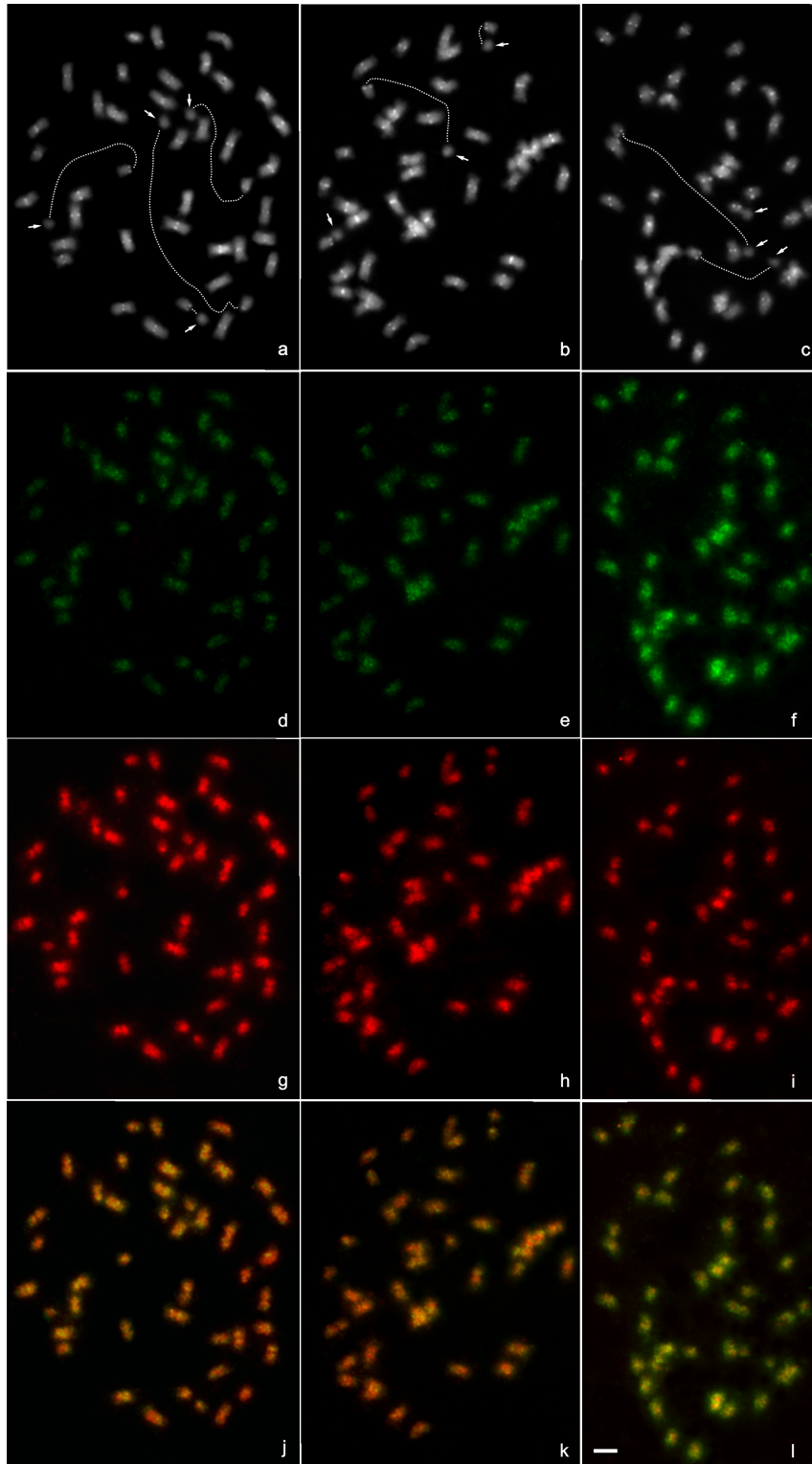


## SUPPLEMENTARY MATERIAL



**Figure S1.** Complete Figure 5. Representative somatic metaphases of tetraploid *A. glabrata* after double GISH (j, k, l). DAPI was used to highlight the heterochromatic bands and to stain euchromatin in Figs. a –c, after GISH with different combinations of gDNA probes from diploid wild *Arachis* species labeled either with FICT (green) or TRICT (red). Double GISH (j) using gDNA probes of *A. duranensis* (green, d) and *A. rigonii* (red, g). Double GISH (k) using gDNA probes of *A. duranensis* (green, e) and *A. paraguariensis* subsp. *capibarensis* (red, h). Double GISH (l) using gDNA probes of *A. paraguariensis* subsp. *capibarensis* (green, f) and *A. rigonii* (red, i). The white arrows point to the satellites, which are attached with dotted lines to the proximal regions of their respective chromosomal arms. Scale bar = 3  $\mu\text{m}$ .

**Table S1.** List of the species, samples studied, GenBank accession numbers and source of the DNA sequences from *Arachis*.

Taxon	ITS		cpDNA		
	Collection number*	GenBank accession numbers	GenBank accession numbers		
			Collection number*	<i>trnT-S</i>	<i>trnT-Y</i>
Sect. <b>Arachis</b>					
<i>A. batizocoi</i>	K 9484	AY615256 <sup>a</sup>	KGBPScS 30079	Not reported <sup>c</sup>	Not reported <sup>c</sup>
<i>A. duranensis</i>	VNVeC 14167	AY615240 <sup>a</sup>	K 7988	Not reported <sup>c</sup>	Not reported <sup>c</sup>
Sect. <b>Erectoides</b>					
<i>A. hermannii</i>	VPoJSv 10390	AY615260 <sup>a</sup>	VRGeSv 7560	OQ420343 <sup>b</sup>	OQ420353 <sup>b</sup>
<i>A. paraguariensis</i> subsp. <i>capibarensis</i>	VMPzW 14024	AY615228 <sup>a</sup>	HLKHe 565/566	OQ420340 <sup>b</sup>	OQ420350 <sup>b</sup>
<i>A. major</i>	VRGeSv 7632	AY615217 <sup>a</sup>	VRGeSv 7632	OQ420341 <sup>b</sup>	OQ420351 <sup>b</sup>
Sect. <b>Heteranthae</b>					
<i>A. pusilla</i>	VFAPzSv 13107	OQ437518 <sup>b</sup>	VFAPzSv 13107	OQ420339 <sup>b</sup>	OQ420349 <sup>b</sup>
Sect. <b>Procumbentes</b>					
<i>A. appressipila</i>	GKP 10002	AY615254 <sup>a</sup>	GKP 9993	OQ420344 <sup>b</sup>	OQ420354 <sup>b</sup>
<i>A. lignosa</i>	VRcSgSv 13570	OQ437515 <sup>b</sup>	VRcSgSv 13570	OQ420342 <sup>b</sup>	OQ420352 <sup>b</sup>
<i>A. rigonii</i>	GKP 10034	OQ437516 <sup>b</sup>	GKP 10034	OQ420338 <sup>b</sup>	OQ420348 <sup>b</sup>
Sect. <b>Rhizomatosae</b>					
<i>A. burkartii</i>	VZnMrOvW 12322	AY615245 <sup>a</sup>	SeSo 2872	OQ420345 <sup>b</sup>	OQ420355 <sup>b</sup>
<i>A. glabrata</i> var. <i>glabrata</i>	Cv. Florigraze	AY615250 <sup>a</sup>	SeLaSo 2842	OQ420346 <sup>b</sup>	OQ420356 <sup>b</sup>
<i>A. glabrata</i> var. <i>hagenbeckii</i>	KGPSc 30107	OQ437517 <sup>b</sup>	KGPSc 30107	OQ420347 <sup>b</sup>	OQ420357 <sup>b</sup>

\*Collectors: B, D.J. Banks; Ec, E.D.Cruz; Fa, L. Faraco de Freitas; G, W.C. Gregory; Ge, M.A.N. Gerin; H, R.O. Hammons; He, V. Hemsy; J, L. Jank; K, A. Krapovickas; L, W.R. Langford; La, G.I. Lavia; P, J.R. Pietrarelli; Po, A. Pott; Pz, E. Pizarro, R, V.R. Rao; Rc, R.C. Oliveira; S, C.E. Simpson; Sc, A. Schinini; Se, J.G. Seijo; Sg, A.K. Singh; So, V. Solís Neffa; Sv, G.P. Silva; V, J.F.M. Valls; W, L. Werneck; Zn: A. Zanin.

<sup>a</sup>Sequences are extracted from Bechara et al. 2010. <sup>b</sup>Sequences amplified in this work. <sup>c</sup>Sequences are extracted from Grabele et al. 2012.