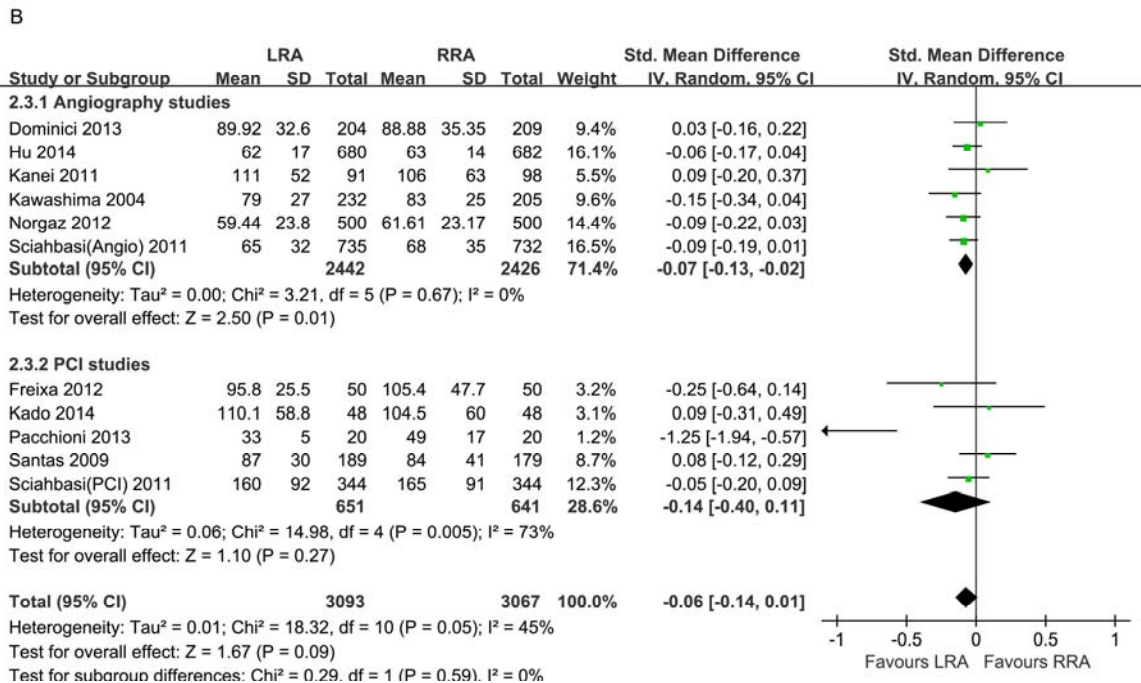
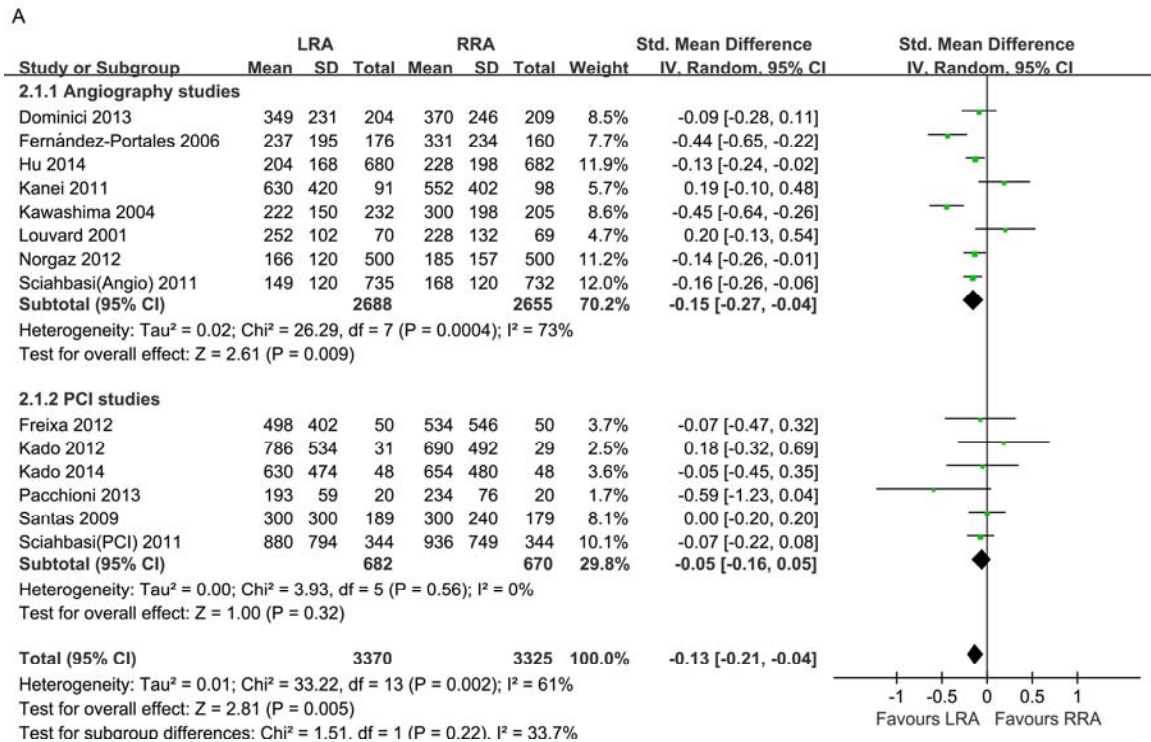


**Figure S1.** A, Subgroup analyses of angiography studies versus percutaneous coronary intervention (PCI) studies. Comparison of the left radial approach (LRA) versus the right radial approach (RRA) for fluoroscopy time. B, Subgroup analyses of angiography studies versus PCI studies. Comparison of the LRA versus the RRA for contrast volume. C, Subgroup analyses of angiography studies versus PCI studies. Comparison of the LRA versus the RRA for procedural time. See Table 1 of the article for numbers of all references cited.



C

